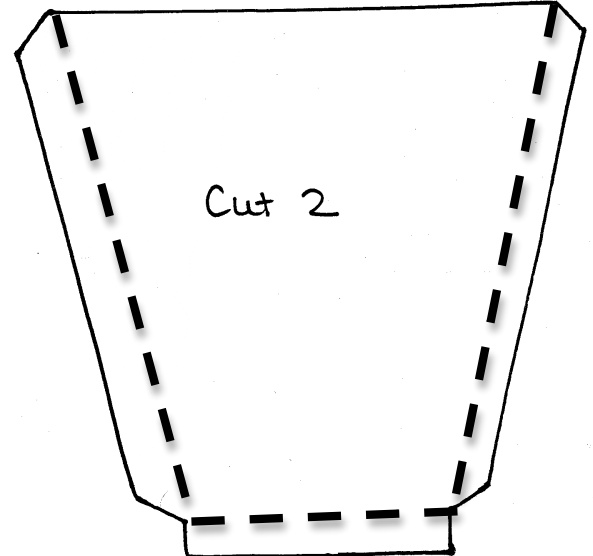
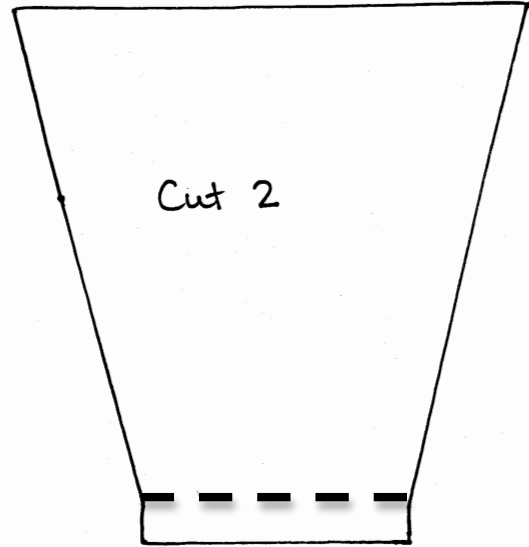
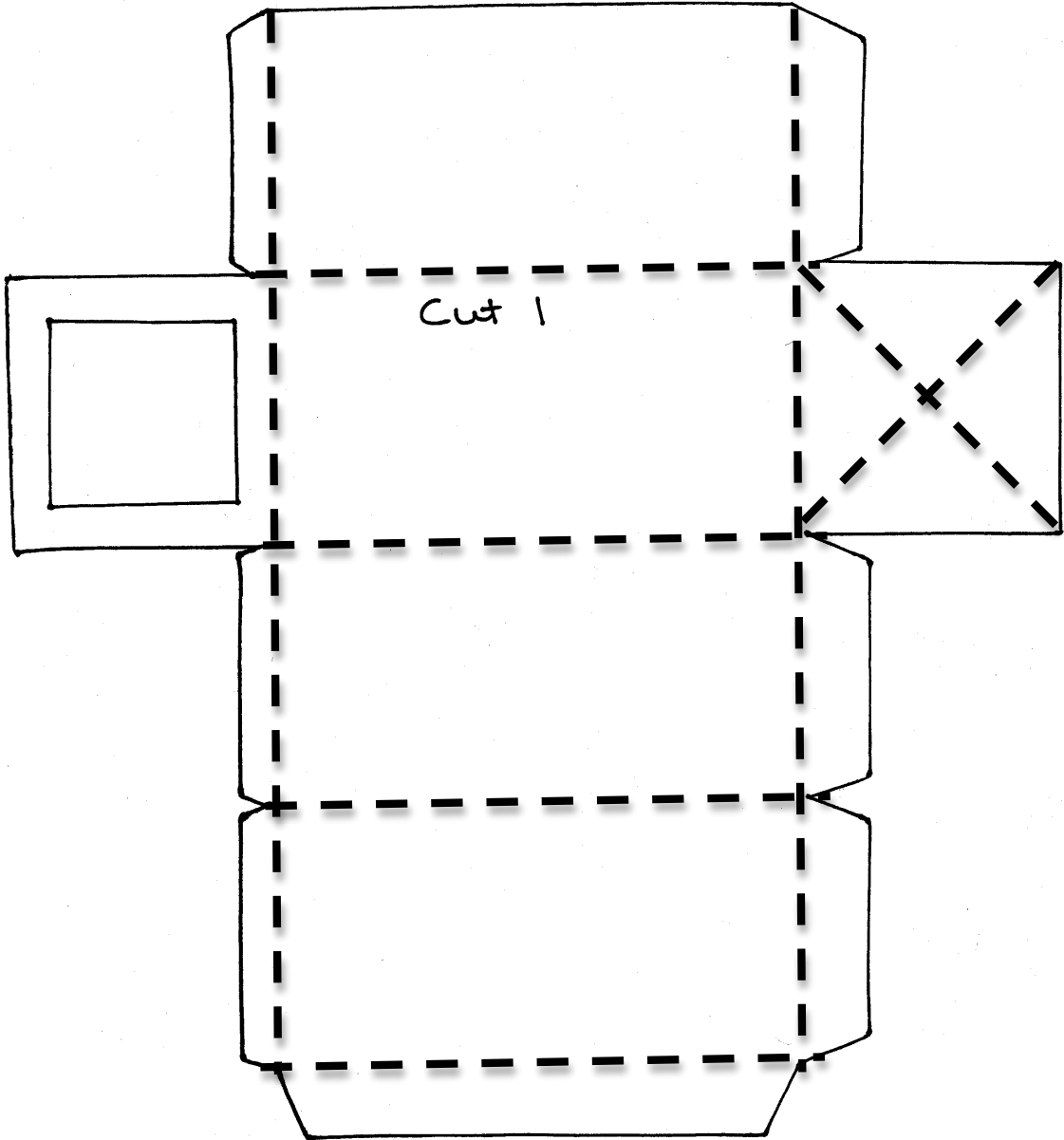


Pinhole Viewer



Cut on the solid lines of the traced Pinhole Viewer pieces.

You may want to use an X-Acto knife to cut the square from the larger piece.

Use an ink pen to trace where indicated with dashed lines. This will help you fold the pieces in the assembly phase. In the square piece that has an X drawn on it, use a 1/8" paper punch to create a hole. This is the hole that will allow light to enter your Pinhole Viewer.

Glue a piece of translucent tracing paper (screen) to the inside of your Pinhole Viewer (side with the lines drawn on it) to cover the cut-out square.

Gently fold on all of the inked lines so you know where the tabs are located. Apply rubber cement to all of tabs and allow to dry. Apply rubber cement to all of the areas that the tabs will attach to and allow to dry.

When all areas of rubber cement are dry, fold your Pinhole Viewer (larger piece) together into a rectangular-shaped box.

Now create the cone-shaped piece that will block out all light when you look through your Pinhole Viewer from the four smaller pieces. Attach the cone-shaped piece to the Pinhole Viewer over the end with the screen.

Use black electrical tape to make your Pinhole Viewer light-tight.

It is best if you can look through your Pinhole Viewer outside in natural light.

What do you see?